

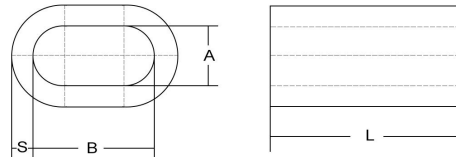


Copper Ferrule Series

- 1-20 mm Copper Oval Ferrule
- 3/64 inch-5/8 inch Copper Hourglass Ferrule
- 3/64 inch-3/8 inch Copper Round Ferrule



DIN3093 Copper Oval Ferrule



Product Name	Copper Oval ferrule
Product Standard	EN 13411-3 (DIN3093)
Product Brand	Klifting [®]
Product Material	Copper
Product Technology	Extrusion
Product Size	1 mm-20 mm

Copper Oval ferrule					
Code	Ferrule Size (mm)	A (mm)	B (mm)	S (mm)	L (mm)
KOC0010	1	1.2	2.4	0.65	5
KOC0015	1.5	1.7	3.4	0.75	6
KOC0020	2	2.2	4.4	0.85	7
KOC0025	2.5	2.7	5.4	1.05	9
KOC0030	3	3.3	6.6	1.25	11
KOC0035	3.5	3.8	7.6	1.5	13
KOC0040	4	4.4	8.8	1.7	14
KOC0045	4.5	4.9	9.8	1.9	16
KOC0050	5	5.5	11	2.1	18
KOC0060	6	6.6	13.2	2.5	21
KOC0070	7	7.8	15.6	2.9	25
KOC0080	8	8.8	17.6	3.3	28
KOC0090	9	9.9	19.8	3.7	32
KOC0100	10	10.9	21.8	4.1	35

KOC0110	11	12.1	24.2	4.5	39
KOC0120	12	13.2	26.4	4.9	42
KOC0130	13	14.2	28.4	5.4	46
KOC0140	14	15.3	30.6	5.8	49
KOC0160	16	17.5	35	6.7	56
KOC0180	18	19.6	39.2	7.6	63
KOC0200	20	21.7	43.4	8.4	70

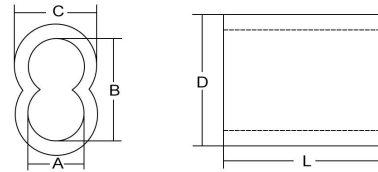
The oval copper ferrule is intended for stainless steel wire rope to avoid galvanic corrosion. It is available in sizes from 1–20 mm. The pressing of oval copper ferrules requires approx 25% higher pressure than the corresponding oval ferrule of aluminium alloy.

Oval copper ferrules are made from copper. These ferrules have been validated according to Klifting Text, which is within the framework of EN 13411-3. The copper material is not accepted in this standard.

Oval copper ferrule is used together with stainless steel wire ropes to avoid galvanic corrosion in a saltwater environment. The same dies as in aluminium turnback ferrules can be used. The material is high grade copper in soft condition. The ferrules are seamlessly extruded over mandrel.

We do not guarantee the strength of slings for lifting activities made of copper turnback ferrules. A termination performed according to our instructions will normally withstand a tensile strength of 90% of minimum breaking load (MBL) of the wire rope. Verifying tests must be done in order to secure the strength of the termination.

US Copper Hourglass Sleeve

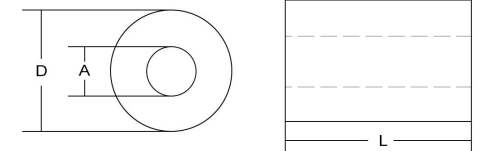
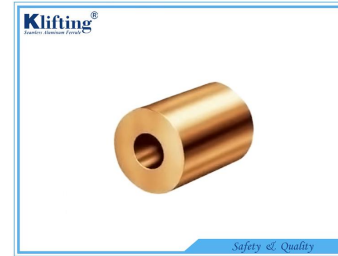


Product Name	Copper Hourglass Sleeve
Product Standard	US
Product Brand	Kliffing [®]
Product Material	Copper
Product Technology	Extrusion
Product Size	3/64 inch-5/8 inch

Copper Hourglass Sleeve

Code	Sleeve Size (inch)	Wire Rope (mm)	A (mm)	B (mm)	C (mm)	D (mm)	L (mm)
KHC0364	3/64	1	1.59	3.18	3.6	5.2	9.5
KHC0116	1/16	1.5	1.98	3.97	4.4	6.4	9.5
KHC0564	5/64	2	2.38	4.76	5.2	7.9	9.5
KHC0332	3/32	2.5	3.18	6.35	7.1	10.3	12.7
KHC0108	1/8	3	3.97	7.94	8.7	12.7	16
KHC0532	5/32	4	4.76	9.53	9.53	14.3	17
KHC0316	3/16	5	5.56	11.11	11.11	16.7	25
KHC0732	7/32	6	6.35	12.7	12.7	19	26
KHC0104	1/4	6.5	7.14	14.29	13.5	20.6	28
KHC0932	9/32	7	7.94	15.88	14.3	22.2	30
KHC0516	5/16	8 or 9	9.53	19.05	17.5	26.2	32
KHC0308	3/8	10 or 11	11.11	22.23	19.1	29.4	36
KHC0716	7/16	12	12.7	25.4	23.8	36.5	42
KHC0102	1/2	13	14.29	28.58	27	41.3	50
KHC0916	9/16	14	15.88	31.75	28.6	44.5	54
KHC0508	5/8	16	17.46	34.93	31.8	49.2	64

US Copper Round Ferrule



Product Name	Copper Round Ferrule
Product Standard	US
Product Brand	Kliffing [®]
Product Material	Copper
Product Technology	Extrusion
Product Size	3/64 inch-3/8 inch

Copper Round Ferrule

Code	Ferrule Size (inch)	A (mm)	D (mm)	L (mm)
KRC0364	3/64	1.54	4.4	4.16
KRC0116	1/16	1.92	6.35	4.16
KRC0564	5/64	2.38	6.35	4.16
KRC0332	3/32	2.9	8.72	7.95
KRC0108	1/8	3.86	8.72	7.95
KRC0532	5/32	4.7	11.11	8.73
KRC0316	3/16	5.54	11.11	8.73
KRC0732	7/32	6.35	11.11	8.73
KRC0104	1/4	7.2	17.46	17.46
KRC0516	5/16	9.53	17.46	17.46
KRC0308	3/8	11.13	17.46	17.46