

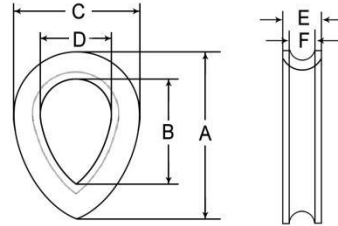


## Wire Rope Thimble Series

- DIN6899 A Wire Rope Thimble
- DIN6899 B Wire Rope Thimble
- BS 464 Wire Rope Thimble
- EN 13411 Wire Rope Thimble
- US Type Heavy G414 Thimble
- US Type G411 Light Thimble
- DIN 3091 / DIN 3091 HD Thimble
- K2/K2B/K3 Thimble
- Sockets

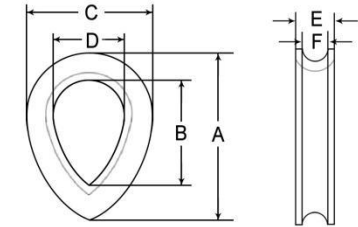


## BS464 Thimble



Code	Size (inch)	Dimensions (inch)						WT/PC (kg)
		A	B	C	D	E	F	
KBS464008	5/16	2-1/8	1-5/16	1-1/2	7/8	1/2	5/16	0.065
KBS464009	3/8	2-1/2	1-1/2	1-7/8	1	9/16	13/32	0.091
KBS464011	7/16	2-7/8	1-1/2	2-1/8	1-1/8	11/16	1/2	0.120
KBS464013	1/2	3-1/8	1-3/4	2-5/16	1-1/4	13/16	9/16	0.160
KBS464014	9/16	3-1/8	1-3/4	2-5/16	1-1/4	13/16	9/16	0.172
KBS464016	5/8	3-7/8	2-5/16	2-15/16	1-5/8	7/8	5/8	0.260
KBS464017	1-1/16	4-1/4	2-5/8	3-1/8	1-3/4	1-1/8	3/4	0.340
KBS464019	3/4	4-7/8	2-7/8	3-5/8	2	1-1/8	13/16	0.450
KBS464022	7/8	4-1/4	3-1/4	4	2-1/4	1-1/4	7/8	0.620
KBS464024	1-5/16	5-3/4	3-5/8	5-11/16	2-1/2	1-5/16	1	0.800
KBS464025	1	6-3/8	4-1/4	4-11/16	2-3/4	1-3/8	1-1/16	0.950
KBS464029	1-1/18	7	4-3/8	5-1/4	3	1-1/8	1-1/8	1.270
KBS464032	1-1/4	7-3/4	5-1/4	6	3-3/4	1-5/8	1-5/16	1.600
KBS464035	1-3/8	9	6	6-7/8	4-1/8	1-7/8	1-1/2	2.350
KBS464038	1-1/2	10	6-1/2	7-3/4	4-1/2	2-1/8	1-5/8	3.300
KBS464041	1-5/8	10	6-1/2	7-3/4	4-1/2	2-3/16	1-1/6	3.350
KBS464044	1-3/4	11-1/4	7	9	5	2-1/4	2	6.250
KBS464048	1-7/8	12-1/4	7-1/2	9-3/4	5-1/4	2-5/8	2-3/8	7.700
KBS464051	2	13	8	10-1/8	5-1/2	3-2/4	2-1/8	8.050
KBS464054	2-1/8	13	8	10-1/8	5-1/2	2-3/4	2-1/2	8.300
KBS464057	2-1/4	14	8-1/2	10-5/8	5-3/4	3	2-5/8	8.600
KBS464064	2-1/2	16-1/4	9-1/2	12-1/4	6-1/4	3-3/4	2-3/4	17.00

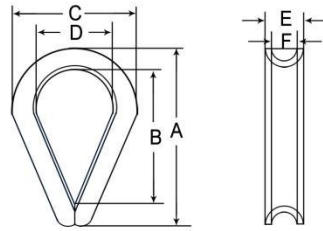
## EN 13411 Thimble



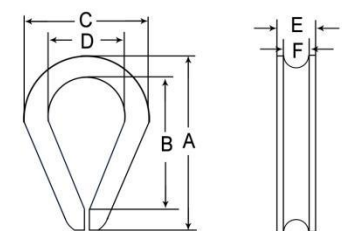
Code	Size (inch)	Dimensions (mm)						WT/PC (kg)
		A	B	C	D	E	F	
KEN13411006	1/4	18	30	7.6	3.8	4	1.7	1.7
KEN13411008	5/16	24	40	9.5	4.7	4.5	2	2
KEN13411010	3/8	30	46	11.4	5.7	5	2	2
KEN13411011	7/16	33	56	13.3	6.6	5	2	2
KEN13411012	1/2	39	66	15.2	7.6	5.5	2.5	2.5
KEN13411014	9/16	42	70	17.4	8.6	5.5	2.5	2.5
KEN13411016	5/8	48	80	19	9.5	8	2.5	2.5
KEN13411017	11/16	51	86	20.9	10.4	8	3	3
KEN13411019	3/4	57	96	22.8	11.4	9	2.7	2.7
KEN13411021	13/16	63	106	24.7	12.3	9	3	3
KEN13411022	7/8	66	110	26.6	13.3	10	3.5	3.5
KEN13411024	15/16	72	120	28.5	14.2	10	3.5	3.5
KEN13411025	1	75	126	30.4	15.2	10	3.5	3.5
KEN13411029	1-1/8	87	146	34.2	17.1	10.5	3.5	3.5
KEN13411032	1-1/4	105	160	38.1	19	11	3.5	3.5
KEN13411035	1-3/8	115	176	41.9	20.9	13.5	4	4
KEN13411038	1-1/2	125	190	45.7	22.8	15	4.5	4.5
KEN13411041	1-5/8	135	206	49.5	24.7	16 or 17	5	5
KEN13411044	1-3/4	140	220	53.3	26.6	19	6	6
KEN13411048	1-7/8	148	240	57.1	28.5	19	6	6
KEN13411051	2	153	256	60.9	30.4	20	6	6
KEN13411054	2-1/8	162	270	64.7	32.3	20	6	6



## US Type Light G411 Thimble



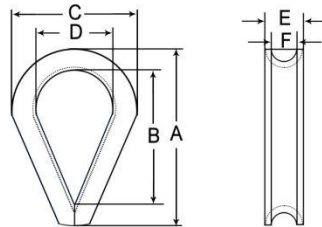
## US Type Heavy Duty Thimble G414



Code	Size (inch)	Dimensions (mm)						WT/PC (kg)
		A	B	C	D	E	F	
KG411003	1/8	49.28	33.27	27	17.5	6.35	4	0.013
KG411005	3/16	49.28	33.27	27	17.5	7.87	5	0.013
KG411006	1/4	49.28	33.27	27	17.5	9.65	7	0.013
KG411008	5/16	54	38	31.75	20.57	11.18	8.6	0.016
KG411010	3/8	60.5	41	37	23.88	13.46	10.4	0.026
KG411013	1/2	69.85	47.75	44.45	28.7	17.53	13.5	0.052
KG411016	5/8	89	57.15	60.45	35.05	23.11	16.8	0.145
KG411019	3/4	95.25	63.5	68.33	41.4	27.43	19.8	0.2
KG411022	7/8	127	88.9	81.03	47.75	32.26	23.88	0.32
KG411025	1	169.93	107.95	95.25	63.5	35.3	26.92	0.4
KG411032	1-1/8 to 1-1/4	158.75	114.3	109.47	69.85	44.45	33.27	0.84
KG411035	1-3/8	207	191.5	145	90	48	36	1.36
KG411038	1-1/2	225	206	165	105	51.62	39.62	1.42
KG411041	1-5/8	248	230	176	110	59	43	1.64
KG411045	1-3/4	264	243.5	180	110	62	46	1.94
KG411048	1-7/8	283	264	186	114.3	68	52	2.14
KG411051	2	289	270	188	114.3	69	53	4.94
KG411064	2-1/2	316.3	295.3	252	152	84	64	7.4

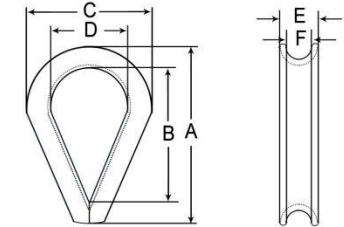
Code	Size (inch)	Dimensions (mm)						WT/PC (kg)
		A	B	C	D	E	F	
KG414003	1/8	49.53	33.53	28.92	17.78	6.35	4	0.012
KG414005	3/16	49.53	33.53	28.92	17.78	6.35	4	0.012
KG414006	1/4	55.62	41.4	38.1	22.35	10.41	7.11	0.012
KG414008	5/16	63.5	47.75	45.97	26.92	12.7	8.64	0.05
KG414010	3/8	73.5	54.1	54.1	28.7	16	10.41	0.1
KG414011	7/16	82.55	60.45	60.45	31.75	18.29	11.94	0.136
KG414013	1/2	92.2	69.85	69.85	38.1	20.57	13.46	0.22
KG414014	9/16	92.2	69.85	68.33	38.1	22.35	15	0.22
KG414016	5/8	107.95	82.55	79.5	44.45	24.64	16.76	0.32
KG414019	3/4	127	92.25	99.77	50.8	31	19.81	0.6
KG414022	7/8	139.7	107.95	107.95	57.15	35.05	23.88	0.86
KG414025	1	155.7	114.3	125.48	63.5	39.62	26.92	1.06
KG414032	1-1/8 to 1-1/4	177.8	130.3	149.35	73.15	45.97	33.27	1.54
KG414035	1-3/8	230.12	165.1	172.97	88.9	55.63	36.58	3.71
KG414038	1-1/2	228.6	158.75	181.1	88.9	65.02	39.62	4.2
KG414041	1-5/8	285.75	203.2	206.5	101.6	69.09	43.67	6.25
KG414045	1-3/4	309.63	228.6	215.9	114.3	72.14	46.74	7.1
KG414051	2	384.3	304.8	263.65	152.4	78.49	53.09	10.44
KG414057	2-1/4	435.1	355.6	301.75	177.8	92.2	60.45	18.44
KG414064	2-1/2	522	399.1	316.2	187.8	102.6	66.6	26.3

## Wire Rope Thimble DIN6899 A



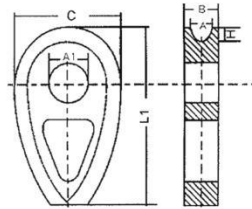
Code	Size (mm)	Dimensions (mm)						WT/PC (kg)
		A	B	C	D	E	F	
KDIN6899A002	2.5	28	21.5	16	10	5	3	0.014
KDIN6899A003	3	30	23.5	17	11	5.5	3.5	0.35
KDIN6899A004	4	34	26.5	19	12	6	4	0.42
KDIN6899A005	5	36	28	20	13	7	5	0.80
KDIN6899A006	6	38	30	22	14	8	6	0.85
KDIN6899A007	7	43	33	24	15	9	7	1.10
KDIN6899A008	8	46	35	26	16	10	8	1.70
KDIN6899A009	9	50	39	29	18	11	9	2.10
KDIN6899A010	10	56	43	32	20	13	10	3.50
KDIN6899A011	11	63	47.5	36	22	14	11	3.70
KDIN6899A012	12	68	51.5	40	24	15	12	5.25
KDIN6899A013	13	75	56.5	44	26	17	13	7.25
KDIN6899A014	14	82	61	48	28	18	14	8.33
KDIN6899A016	16	91	69.5	54	32	21	16.5	12.30
KDIN6899A018	18	102	78	59	35	24	18	18.50
KDIN6899A020	20	114	86.5	68	40	28	20	31.50
KDIN6899A022	22	126	95	76	44	30	22	36.50
KDIN6899A024	24	135	103.5	84	48	32	24	41.70
KDIN6899A028	28	162	120.5	100	56	38	28	72.10

## Wire Rope Thimble DIN6899 B

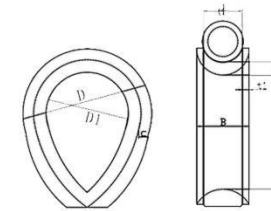


Code	Size (mm)	Dimensions (mm)						WT/PC (kg)
		A	B	C	D	E	F	
KDIN6899B003	3	28	19	18.5	12	6	3	0.5
KDIN6899B004	4	30	21	20.5	13	7	4	0.8
KDIN6899B005	5	33	23	22.5	14	8	5	1
KDIN6899B006	6	39	26	27	16	10	6	1.60
KDIN6899B007	7	43	30	30	18	11	7	1.90
KDIN6899B008	8	48	32	33	20	12	8	3.00
KDIN6899B010	10	58	38	39	24	14	10	4.70
KDIN6899B012	12	69	45	47	28	17	12	6.80
KDIN6899B013	13	73	48	50	30	18	13	8.00
KDIN6899B014	14	77	51	53	32	19	14	10.00
KDIN6899B016	16	88	58	60	36	22	16	14.50
KDIN6899B017	17	95	61	65	38	25	17	18.00
KDIN6899B018	18	100	64	68	40	26	18	20.00
KDIN6899B020	20	113	72	75	45	28	20	29.00
KDIN6899B022	22	123	80	82	50	30	22	32.00
KDIN6899B024	24	135	90	92	56	34	24	47.00
KDIN6899B026	26	145	99	100	62	36	26	59.00
KDIN6899B028	28	162	112	110	70	38	28	80.00
KDIN6899B030	30	175	120	120	75	42	30	110.00

## DIN3091 Heavy Duty Thimble



## JIS A Thimble

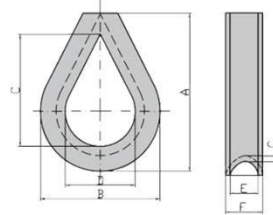


No.	Size	Dimension(mm)					
		A	B	A1	C	L1	H
KDIN3091HD008	8	9	15	14	40	66	4.5
KDIN3091HD010	10	11	17.5	18	50	82	6
KDIN3091HD012	12	13	20	21	60	98	7.5
KDIN3091HD014	14	16	23.5	25	70	114	9
KDIN3091HD016	16	18	26	28	80	130	10.5
KDIN3091HD018	18	20	28.5	31	90	145	12
KDIN3091HD020	20	22	31	35	100	161	13.5
KDIN3091HD022	22	24	33.5	38	110	177	15
KDIN3091HD024	24	26	36	41	120	193	16.5
KDIN3091HD026	26	29	39.5	44	130	209	18
KDIN3091HD028	28	31	42	47	140	224	20
KDIN3091HD032	32	35	47	53	160	256	23
KDIN3091HD036	36	40	53	59	180	288	26
KDIN3091HD040	40	44	58	65	200	320	29
KDIN3091HD044	44	48	63	70	220	352	32
KDIN3091HD048	48	53	69	76	240	384	35

No.	Size (mm)	Dimensions(mm)							
		d	B	D	D1	L1	L	t	t1
KJIS006	6	6	8	27	16	26	36	3	1
KJIS008	8	8	10	36	22	35	48	4	1
KJIS009	9	9	11	40	25	38	51	4	1
KJIS010	10	10	13	45	28	44	58	4	1.5
KJIS012	12	12	15	54	34	52	68	5	1.5
KJIS014	14	14	17	61	38	58	78	6	1.5
KJIS016	16	16	20	72	44	68	92	7	2
KJIS018	18	18	22	75	48	76	100	7	2
KJIS020	20	20	24	86	54	85	112	8	2
KJIS022	22	22	27	95	60	92	122	9	2.5
KJIS024	24	24	29	105	65	102	136	10	2.5
KJIS026	26	26	31	110	70	110	144	10	2.5
KJIS028	28	28	33	120	75	120	156	11	2.5
KJIS030	30	30	35	130	80	125	166	12	2.5
KJIS032	32	32	38	140	85	135	180	13	3
KJIS034	34	34	40	145	90	140	186	14	3
KJIS036	36	36	42	150	95	150	196	14	3
KJIS038	38	38	44	160	100	155	205	15	3
KJIS040	40	40	46	170	105	165	220	16	3
KJIS042	42	42	50	180	110	175	232	17	4
KJIS044	44	44	52	190	115	180	242	18	4
KJIS046	46	46	54	195	120	190	252	18	4
KJIS048	48	48	56	205	125	195	260	19	4
KJIS050	50	50	58	215	130	205	274	20	4

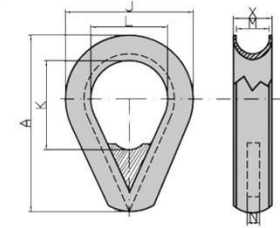


## K2 Thimble



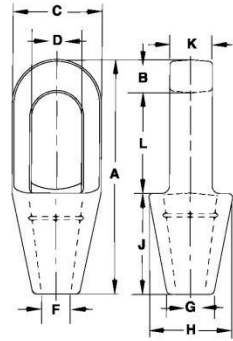
No.	Dimension(mm)						Weight/Kg (100)
	A	B	C	D	E	F	
KK20002	2	42	35	22	9	14	6
KK20211	2-1/2	50	45	30	11	15	7.6
KK20003	3	58	55	35	13	18	14
KK20312	3-1/2	73	65	45	15	20	23
KK20004	4	75	75	50	17	22	26
KK20412	4-1/2	85	86	53	19	25	38
KK20005	5	100	93	60	21	29	61
KK20512	5-1/2	110	105	65	23	33	78
KK20006	6	115	115	70	25	34	96
KK20007	7	135	130	80	30	38	145
KK20008	8	155	160	100	33	44	166
KK20009	9	175	178	115	38	49	240
KK20010	10	190	195	120	41	52	330
KK20011	11	210	215	130	46	60	530
KK20012	12	225	240	140	52	65	790
KK20014	14	240	275	150	56	69	950
KK20017	17	290	350	180	70	88	1800
KK20017	17	290	350	180	66	98	1700
KK20019	19	320	405	220	81	121	2800
KK20022	22	375	470	240	92	132	3630
KK20022	22	375	470	240	85	125	3630
KK20024	24	410	510	250	105	145	4600
KK20024	24	410	510	250	98	138	4600
KK20025	25	430	530	265	108	148	5200
KK20025	25	430	530	265	115	155	5200
KK20026	26	450	550	280	120	160	5500
KK20026	26	450	550	280	130	170	5500

## K2B Thimble



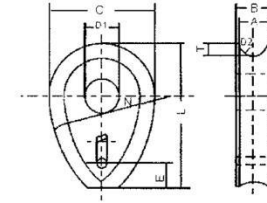
No.	Dimension(mm)							Weight Kg (100)
	A/inch	J/mm	K/mm	L/mm	M/mm	N/mm	X/mm	
KK2B0004	4"	75	50	50	17	5	22	30
KK2B0412	4-1/2"	85	50	53	19	5	25	42
KK2B0005	5"	100	60	60	21	5	29	67
KK2B0512	5-1/2"	110	60	65	23	5	33	83
KK2B0006	6"	115	70	70	25	10	34	110
KK2B0007	7"	135	75	80	30	10	38	160
KK2B0008	8"	155	80	100	33	10	44	200
KK2B0009	9"	175	110	115	38	10	49	270
KK2B0010	10"	190	120	120	41	15	52	395
KK2B0011	11"	210	130	130	46	15	60	600
KK2B0012	12"	225	140	140	52	15	65	886
KK2B0014	14"	240	150	150	53	20	68	1100
KK2B1770	17"x70	290	185	180	70	20	88	1980
KK2B1770	17"x70	290	185	180	72	20	104	1880
KK2B0019	19"	320	225	220	81	20	121	3060
KK2B0022	22"	375	280	240	92	20	132	3800
KK2B0024	24"	410	280	250	105	25	145	5000
KK2B25108	25"x108	430	280	265	108	28	148	5800
KK2B25115	25"x115	430	280	265	115	28	155	5800
KK2B0026	26"	450	280	280	130	30	170	6300
KK2B26120	26"x120	450	280	280	123	30	163	6300

## Closed Spelter Sockets



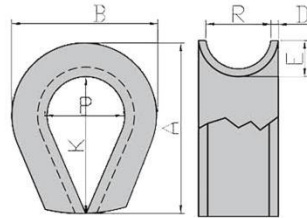
No.	Rope Dia.		Structural Strand Dia. (mm)	Ultimate Load (t)	Weight Each (kg)	Dimensions (mm)												
	(mm)	(in.)				A	B	C	D	F	G	H	J	K	L			
KCSS000014	6-7	1/4	-	4.5	0.23	116	12.7	39.6	22.4	9.65	17.5	39.6	57.2	12.7	46			
KCSS051638	8-10	5/16 - 3/8	-	12	0.34	125	15.8	42.9	24.6	12.7	20.6	42.9	57.2	17.5	52.3			
KCSS071612	11-13	7/16 - 1/2	-	20	0.68	140	17.5	51	29.5	14.2	23.9	51	63.5	22.4	58.7			
KCSS091658	14-16	9/16 - 5/8	12-13	30.8	1.13	162	20.6	67	35.8	17.5	30.2	67	76.2	25.4	65			
KCSS000034	18	3/4	14-16	43.5	1.92	194	26.9	76.2	42.2	22.4	33.3	70	89	31.8	77.7			
KCSS000078	20-22	7/8	18-19	65.3	3.28	226	33.3	92	49.3	25.4	38.1	82.5	102	38.1	90.5			
KCSS000001	24-26	1	20-22	81.6	4.76	254	36.6	105	58.5	28.7	44.5	95.5	114	44.5	103			
KCSS010018	28-30	1-1/8	24-26	100	6.46	283	39.6	114	65	31.8	51	105	127	51	116			
KCSS011438	32-35	1-1/4 - 1-3/8	28	136	8.95	309	41.4	127	71	38.1	58.5	119	138	56.5	129			
KCSS010012	38	1-1/2	30-32	170	13.24	355	49.3	137	81	41.4	70.5	132	151	62.5	155			
KCSS010058	† 40-42	† 1-5/8	33-35	188	16.32	390	54	146	82.5	44.5	76.2	140	165	70	171			
KCSS013478	† 44-48	† 1-3/4 - 1-7/8	36-40	268	25.96	445	55.5	171	95.5	51	79.5	162	191	76.2	198			
KCSS020018	† 50-54	† 2 - 2-1/8	42-45	309	35.83	505	62	194	111	57.2	95.5	187	216	82.5	224			
KCSS021438	† 56-60	† 2-1/4 - 2-3/8	46-48	360	47.62	546	70	216	127	66.8	105	210	229	92	248			
KCSS021258	† 64-67	† 2-1/2 - 2-5/8	50-54	424	63.5	597	79.5	241	140	74.5	114	235	248	102	270			
KCSS023478	† 70-73	† 2-3/4 - 2-7/8	56-62	549	99.79	645	79.5	273	159	79.5	124	259	279	124	286			
KCSS030018	† 75-80	† 3 - 3-1/8	64-67	656	125	689	85.6	292	171	86	133	292	305	133	298			
KCSS031438	† 82-86	† 3-1/4 - 3-3/8	70-73	750	142	743	102	311	184	92	146	311	330	146	311			
KCSS031258	† 88-92	† 3-1/2 - 3-5/8	76-80	820	181	787	102	330	197	98.5	160	330	356	159	330			
KCSS033404	† 94 - 102	† 3-3/4 - 4	-	1005	246	845	108	362	216	108	184	362	381	178	356			

## DIN3091 Thimble



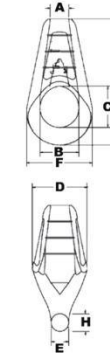
No.	Size (mm)	Dimension (mm)						
		A	B	C	D1	T	L	N
KDIN3091008	8	9	15	40	14	4.5	56	48
KDIN3091010	10	11	17.5	50	18	6	70	60
KDIN3091012	12	13	20	60	21	7.5	84	72
KDIN3091014	14	16	23.5	70	25	9	98	84
KDIN3091016	16	18	26	80	28	10.5	110	96
KDIN3091018	18	20	28.5	90	31	12	130	110
KDIN3091020	20	22	31	100	35	13.5	140	120
KDIN3091022	22	24	33.5	110	38	15	150	130
KDIN3091024	24	26	36	120	41	16.5	170	140
KDIN3091026	26	29	39.5	130	44	18	180	160
KDIN3091028	28	31	42	140	47	20	200	170
KDIN3091032	32	35	47	160	53	23	220	190
KDIN3091036	36	40	53	180	59	26	250	220
KDIN3091040	40	44	58	200	65	29	280	240
KDIN3091044	44	48	63	220	70	32	310	260

## K2 Thimble



No.	Size/inch	Dimension(mm)							Weight/Kg
		A	B	D	E	P	K	R	
KK30214	2-1/4"	57	47	3	8	26	42	16	0.08
KK30212	2-1/2"	64	55	4	9	32	48	18	0.14
KK30003	3"	76	64	4	10	38	58	20	0.19
KK30314	3-1/4"	82	67	4	11	39	60	22	0.26
KK30312	3-1/2"	89	75	4	13	42	74	26	0.28
KK30004	4"	102	80	5	16	50	78	32	0.52
KK30005	5"	127	110	6	20	65	95	40	0.97
KK30006	6"	152	120	7	24	75	115	28	1.50
KK30007	7"	178	140	7	28	85	140	56	2.10
KK30008	8"	203	160	8	32	105	160	54	3.20
KK30009	9"	229	180	10	36	110	178	72	5.00
KK30010	10"	254	200	10	40	120	190	80	6.10
KK30011	11"	279	220	12	45	145	210	90	9.00
KK30012	12"	305	245	14	51	150	230	102	13.2
KK30014	14"	356	300	14	58	170	290	115	17.2
KK30016	16"	406	320			185	310	130	
KK30018	18"	350	350			205	340	150	

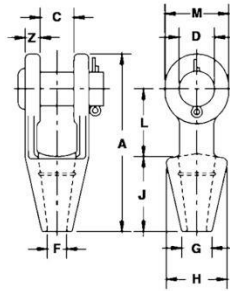
## Mooring Spelter Sockets



No.	Wire Rope Size		Ultimate Weight		Dimensions (mm)							
	(mm)	(in.)	Load (t)	Each (kg)	A	B	C	D	E	F	G	H
KMSS011438	32-35	1-1/4 - 1-3/8	113	7.7	41.4	78.5	92.2	113	36.6	130	277	38.9
KMSS011258	38-41	1-1/2 - 1-5/8	136	13.6	49.5	93.7	110	138	40.6	160	330	46
KMSS013478	44-48	1-3/4 - 1-7/8	181	19.5	56.6	106	115	160	46.7	183	358	53.1
KMSS020018	50-54	2 - 2-1/8	227	25.9	63.5	121	134	178	53.1	210	407	56.9
KMSS021438	57-60	2-1/4 - 2-3/8	277	34.5	70.6	133	146	196	58.7	233	455	66.6
KMSS021258	64-67	2-1/2 - 2-5/8	363	48.1	77.5	149	170	217	68.3	257	505	67.6
KMSS023478	70-73	2-3/4 - 2-7/8	454	62.6	84.6	165	181	237	76.2	282	549	63
KMSS030018	76-79	3 - 3-1/8	544	87.5	89.9	184	197	262	82.6	313	597	82.3
KMSS031438	82-86	3-1/4 - 3-3/8	635	104	96.8	194	224	278	88.9	334	654	87.1
KMSS031258	88-92	3-1/2 - 3-5/8	735	127	105	203	230	298	93.7	355	703	105
KMSS033404	95-102	3-3/4 - 4	907	174	112	222	267	328	93.7	403	765	113

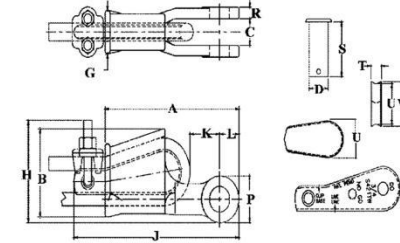


## Open Spelter Sockets



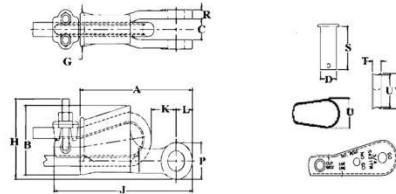
No.	Rope Dia.		Structural Strand Dia. (mm)	Ultimate Weight		Dimensions (mm)											Tolerance +/-
	(mm)	(in.)		Load (t)	Each (kg)	A	C	D	F	G	H	J	L	M	N	C	
KOSS014000	6-7	1/4	-	4.5	0.5	116	19.1	17.5	9.65	17.5	39.6	57	39.6	33.3	9.1	1.52	
KOSS051638	8-10	5/16-3/8	-	12	0.59	123	20.6	20.6	12.7	20.6	42.9	57	44.5	38.1	11.2	1.52	
KOSS071612	11-13	7/16-1/2	-	20	1.02	141	25.4	25.4	14.2	23.9	47.8	63.5	51	47.8	12.7	1.52	
KOSS091658	14-16	9/16-5/8	12-13	27	1.63	171	31.8	30.2	17.5	28.7	57	76	63.5	57	14.2	1.52	
KOSS034000	18	3/4	14-16	43	2.64	202	38.1	35.1	20.6	31.8	66.5	89	76	66.5	15.7	1.52	
KOSS078000	20-22	7/8	18-19	55	4.38	235	44.5	41.4	23.9	38.1	82.5	102	89	79.5	20.3	1.52	
KOSS010000	24-26	1	20-22	78	7.03	268	51	51	28.7	44.5	95.5	114	102	95.5	22.4	1.52	
KOSS010018	28-30	1-1/8	24-26	92	9.75	300	57	57	31.8	51	105	127	117	105	25.4	3.05	
KOSS011438	32-35	1-1/4 - 1-3/8	28	136	14.1	335	63.5	63.5	38.1	57	121	140	127	121	28.7	3.05	
KOSS010012	38	1-1/2	30-32	170	21.4	384	76	70	41.4	70	133	152	152	137	30.2	3.05	
KOSS010058	40-42	1-5/8	33-35	188	24.9	413	76	76	44.5	76	140	165	165	146	33.3	3.05	
KOSS013478	44-48	1-3/4 - 1-7/8	36-40	268	37.2	464	89	89	51	79.5	162	191	178	165	39.6	3.05	
KOSS020018	50-54	2 - 2-1/8	42-45	291	59	546	102	95.5	57	95.5	187	216	229	178	46	3.05	
KOSS021438	56-60	2-1/4 - 2-3/8	46-48	360	76	597	114	108	63.5	102	210	229	254	197	54	3.05	
KOSS021258	64-67	2-1/2 - 2-5/8	50-54	424	114	648	127	121	73	114	235	248	274	216	60.5	3.05	
KOSS023478	70-73	2-3/4 - 2-7/8	56-62	511	143	692	133	127	79	124	267	279	279	229	73	6.35	
KOSS030018	75-80	3 - 3-1/8	64-67	563	172	737	146	133	86	133	282	305	287	241	76	6.35	
KOSS031438	82-86	3-1/4 - 3-3/8	70-73	722	197	784	159	140	92	146	302	330	300	254	79	6.35	
KOSS031258	88-92	3-1/2 - 3-5/8	76-80	779	255	845	171	152	98.5	165	314	356	318	274	82.5	6.35	
KOSS033404	94-102	3-3/4 - 4	-	875	355	921	191	178	108	184	346	381	343	318	89	6.35	

## Utility Wedge Sockets



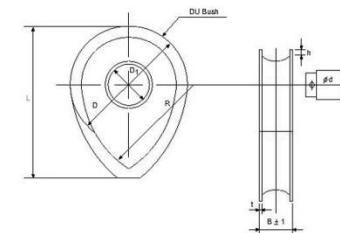
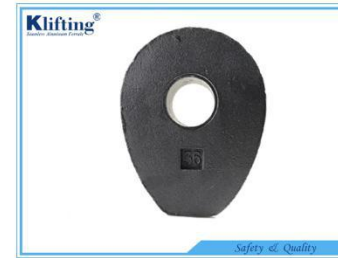
Model No.	Wire Rope Size		Dimensions (mm)														
	(mm)	(in.)	A	B	C +/- 2.29	D	G	H	J	K	L	P	R	S	T	U	V
KUWC0308	10	3/8	173	90.2	25.4	25.4	41.4	71.4	214	35.1	26.9	49.3	12.7	64.3	11.2	48.5	54.4
KUWC0716	11	7/16	173	90.2	25.4	25.4	41.4	71.4	222	27.4	26.9	49.3	12.7	64.3	13.5	44.7	47.8
KUWC0102	13	1/2	173	90.2	25.4	25.4	41.4	71.4	222	25.9	26.9	49.3	12.7	64.3	13.5	44.7	47.8
KUWC0102	13	1/2	233	107	35.8	31.8	54.1	84.1	284	46.7	38.1	76.2	16	82.6	19.1	48.8	54.9
KUWC0916	14	9/16	233	107	35.8	31.8	54.1	84.1	291	61	38.1	76.2	16	82.6	17.5	50.8	55.4
KUWC0508	16	5/8	233	107	35.8	31.8	54.1	84.1	291	59.4	38.1	76.2	16	82.6	17.5	50.8	55.4
KUWC0508	16	5/8	240	119	38.1	31.8	56.9	92.2	303	63	38.1	76.2	14.2	82.6	22.4	60.5	69.9
KUWC0304	19	3/4	240	119	38.1	31.8	56.9	92.2	300	51.6	38.1	76.2	14.2	82.6	22.4	54.1	66.8
KUWC0508	16	5/8	269	144	46	41.4	60.5	140	335	48.5	38.9	73.2	19.1	105	17.5	82.8	88.9
KUWC0304	19	3/4	269	144	46	41.4	60.5	148	344	60.5	38.9	73.2	19.1	105	19.8	79.2	85.9
KUWC0708	22	7/8	286	130	33.3	31.8	68.3	—	—	65	41.4	82.8	16.8	82.6	26.9	53.8	65
KUWC0001	25	1	286	130	33.3	31.8	68.3	—	—	65	41.4	82.8	16.8	82.6	26.9	47.8	60.5
KUWC0708	22	7/8	324	177	46	41.4	77.7	183	407	72.9	41.9	79.2	19.1	105	22.4	98.6	106
KUWC0001	25	1	324	177	46	41.4	77.7	186	417	58.9	41.9	79.2	19.1	105	26.2	95.5	103
KUWC0118	28	1-1/8	405	219	46	41.4	90.7	232	501	82.8	55.6	111	19.1	105	27.7	121	129
KUWC0114	32	1-1/4	405	219	46	41.4	90.7	239	514	71.9	55.6	111	19.1	105	30.2	117	125
KUWC0118	28	1-1/8	415	222	66.5	63.5	90.4	232	507	85.6	59.4	114	26.9	156	27.7	121	129
KUWC0114	32	1-1/4	415	222	66.5	63.5	90.4	239	520	74.7	59.4	114	26.9	156	30.2	117	125

## Wedge Sockets



No.	Wire Rope Dia.		Dimensions (mm)														
	(mm)	(in.)	A	B	C +/- 2.29	D	G	H	J	K	L	P	R	S	T	U	V
KWC0308	9-10	3/8	145	69.1	20.6	20.6	35.1	77.7	198	47.8	22.4	39.6	11.2	54.1	11.2	31.8	35.1
KWC0102	11-13	1/2	175	88.1	25.4	25.4	41.1	95.5	226	32	26.9	49.3	12.7	65	13.5	44.5	47.8
KWC0508	14-16	5/8	210	109	31.8	30.2	53.8	114	273	50.5	31	57.2	14.2	82.6	17.5	51	55.5
KWC0304	18-19	3/4	251	130	38.1	35.1	62	134	314	61.2	35.6	66.8	16.8	92.2	19.8	59.5	65
KWC0708	20-22	7/8	286	149	44.5	41.4	68.5	156	365	63	42.4	79.5	19.1	109	22.4	68.5	74.5
KWC0001	24-26	1	325	161	51	51	74.7	177	414	77.2	51	95.5	22.4	119	26.2	73	83.5
KWC0118	28	1-1/8	365	176	57	57	84	194	466	65	57	108	25.4	138	27.9	82.6	90.5
KWC0114	30-32	1-1/4	415	222	66.5	63.5	90.5	239	520	74.7	59.5	114	26.9	156	30.2	117	125

## JIS Thimble



JIS Thimble No.	Rope Dia. (mm)	Dimension(mm)								Pin Dia. d (mm)
		L	D	D1	R	B	t	r	h	
KJIS024	20	136	105	42	112	29	2.5	13	10	36
KJIS026	22.4	144	110	42	120	31	2.5	13.5	10	36
KJIS028	24.25	156	120	50	131	33	2.5	14.8	11.5	42
KJIS030	26	166	130	50	137	35	2.5	15.5	13	42
KJIS032	28	180	140	50	148	38	3	16.5	14.5	42
KJIS034	30/31.5	186	145	55	154	40	3	17.5	13.5	48
KJIS036	32/33.5	196	150	55	164	42	3	19	13.5	48
KJIS045	35/35.5/40	242	190	75	198	52	4	22.5	19.5	64