



Klifting Industrial Co., Ltd

Tel: 0086-156-3223-9818

Fax: 0086-312-3152-365

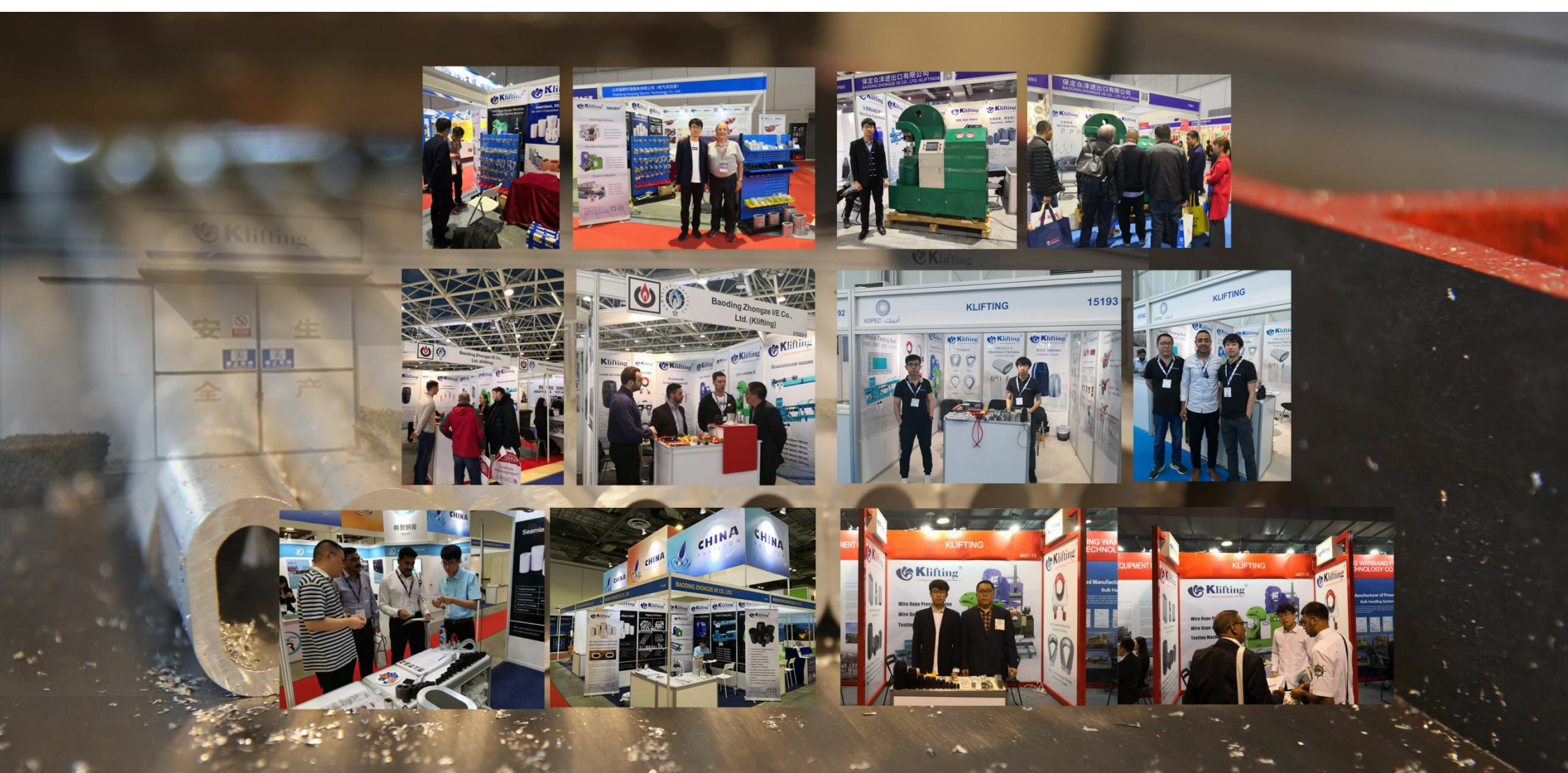
Website: <http://www.klifting-rigging.com>



We promise: We commit ourselves to constant improvement of our design and processing of our products. In order to achieve the goal, we keep the right of perfecting the instruction book and the product design. (2021 version)

*Seamless Ferrule, Safer!*





Klifting was founded in 2011 based on high quality OEM manufacturers. Since then ,the mechanical splicing of wire ropes had been added to our manufactured and distributed products. Nowadays, we are the leading supplier of wire rope terminals in the rigging industry. In addition to the ferrules, we could also provide suitable accessories and the most diversified services. As a system supplier, we could not only provide the correct ferrules for your application, but also the right tools, enables you to handle these ferrules in a professional and standards-compliant manner.







## Aluminum Ferrule Series

Based on the experience of aluminum profiles extrusion, after research and development of seamless aluminum ferrules, we can produce seamless oval ferrules directly by seamless extrusion. We customize all kinds of ferrules to meet different client's requirements.

- EN 13411-3 Aluminum Oval Ferrule
- US Aluminum Hourglass Ferrule
- Aluminum Round Ferrule
- Form C Ferrule Without Inspection Hole
- Form C Ferrule With Inspection Hole





## How to Distinguish Seamless Ferrule?

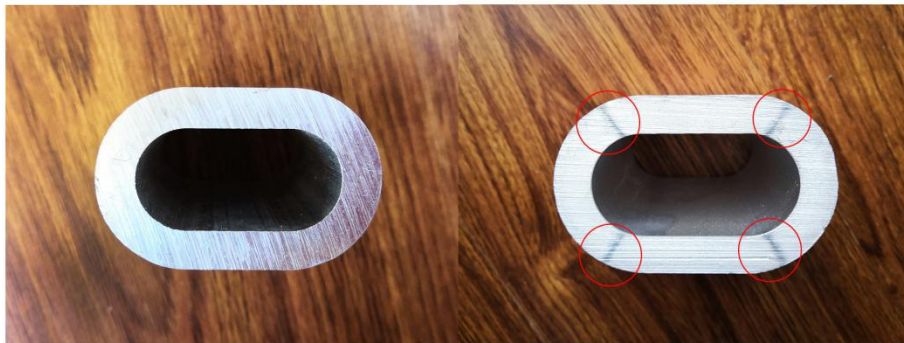
Wire rope ferrules can be divided into two types, welded ferrules and seamless ferrules. Welded ferrules are made by common extruding technology like window or door aluminum profiles. The material usually use 6063 alloy, which is not suit the requirement of DIN3093 (EN 13411-3). The technology is also unqualified based on the requirement of EN 13411-3.

Seamless ferrules are produced from seamfree extrusions which are extruded seamless over mandrel and the aluminum alloy should be 5051A according to EN 573-3. Seamless ferrules suit for the requirements of DIN3093 (EN 13411-3), and are well used in the lifting gear industry. The most obvious difference between welded ferrules and seamless ferrules is performance. Seamless is more safe!



Second case, some ferrules can't be distinguished after surface treatment. In this situation, please follow our guide: put the ferrule into the sodium hydroxide solution with 10% sodium hydroxide, after five to ten minutes, you will find the welding lines are exposed.

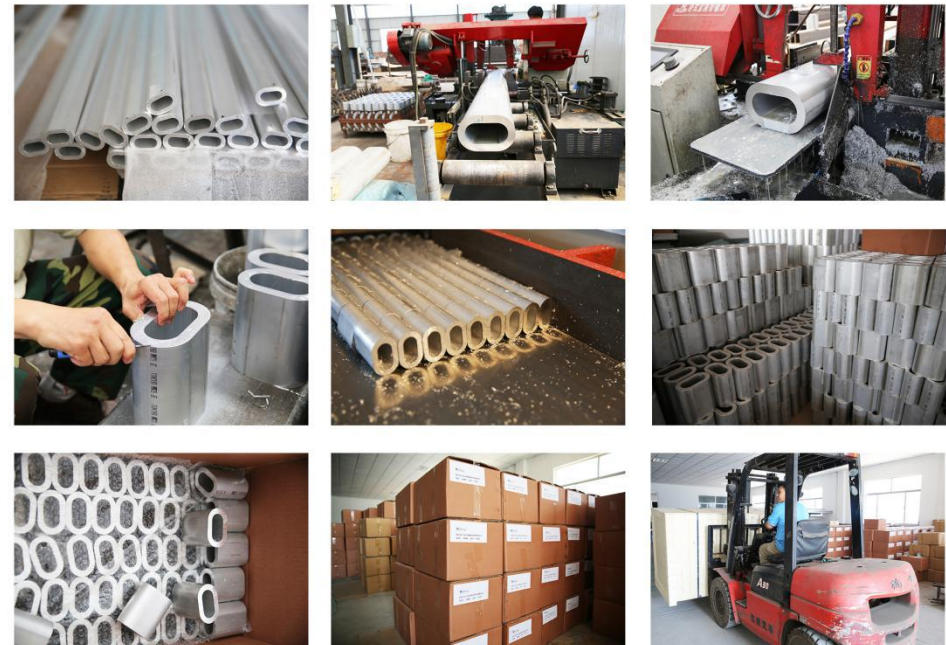
There are so many tragedy caused by the inferior sling in the rigging field. Klifting keep that safety is the lifeline of rigging products. Please look before you leap.



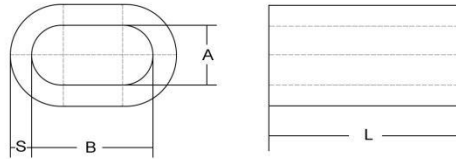
Seamless Ferrule

Welded Ferrule

First case, you can differentiate them directly. As the picture show below, the welded ferrules have four welding lines.



## EN 13411-3 Seamless Aluminum Oval Ferrule



Product Name	Seamless Aluminum Oval Ferrule
Product Standard	EN 13411-3 (DIN3093)
Product Brand	<b>Klifting</b> <sup>®</sup>
Product Material	5051A or 5051, 5052 Aluminum Alloy
Product Technology	Extrusion
Product Size	1 mm-102 mm

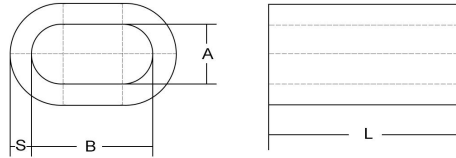
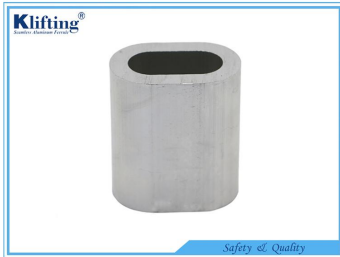
EN 13411-3 Seamless Aluminum Oval Ferrule

Part No	Ferrule Size (mm)	A (mm)	B (mm)	S (mm)	L (mm)
KDA110010	1	1.2	2.4	0.65	5
KDA110015	1.5	1.7	3.4	0.75	6
KDA110020	2	2.2	4.4	0.85	7
KDA110025	2.5	2.7	5.4	1.05	9
KDA110030	3	3.3	6.6	1.25	11
KDA110035	3.5	3.8	7.6	1.5	13
KDA110040	4	4.4	8.8	1.7	14
KDA110045	4.5	4.9	9.8	1.9	16
KDA110050	5	5.5	11	2.1	18
KDA110060	6	6.6	13.2	2.5	21
KDA110065	6.5	7.2	14.4	2.7	23
KDA110070	7	7.8	15.6	2.9	25
KDA110080	8	8.8	17.6	3.3	28
KDA110090	9	9.9	19.8	3.7	32
KDA110100	10	10.9	21.8	4.1	35
KDA110110	11	12.1	24.2	4.5	39

KDA110120	12	13.2	26.4	4.9	42
KDA110130	13	14.2	28.4	5.4	46
KDA110140	14	15.3	30.6	5.8	49
KDA110160	16	17.5	35	6.7	56
KDA110180	18	19.6	39.2	7.6	63
KDA110200	20	21.7	43.4	8.4	70
KDA110220	22	24.3	48.6	9.2	77
KDA110240	24	26.4	52.8	10	84
KDA110260	26	28.5	57	10.9	91
KDA110280	28	31	62	11.7	98
KDA110300	30	33.1	66.2	12.5	105
KDA110320	32	35.2	70.4	13.4	112
KDA110340	34	37.8	75.6	14.2	119
KDA110360	36	39.8	79.6	15	126
KDA110380	38	41.9	83.8	15.8	133
KDA110400	40	44	88	16.6	140
KDA110420	42	46.2	92.4	17.5	147
KDA110440	44	48.4	96.8	18.3	154
KDA110460	46	50.6	101.2	19.2	161
KDA110480	48	52.8	105.6	20	168
KDA110500	50	55	110	20.8	175
KDA110520	52	57.2	114.4	21.6	182
KDA110540	54	59.4	118.8	22.5	189
KDA110560	56	61.6	123.2	23.3	196
KDA110580	58	63.8	127.6	24.2	203
KDA110600	60	66	132	25	210
KDA110620	62	66.5	133	25	216
KDA110640	64	68.5	137	27	224
KDA110660	66	70.5	141	27.9	230
KDA110680	68	72.5	145	28.1	237
KDA110700	70	74.5	149	28.8	244
KDA110740	74	78.5	157	30.4	260
KDA110780	78	83	166	32	270
KDA110840	84	89.4	178.8	34.5	294
KDA110900	90	95.8	191.6	36.9	315
KDA110960	96	102.2	204.4	39.4	336
KDA111020	102	108.6	217.2	41.9	357



## Common Aluminum Oval Ferrule

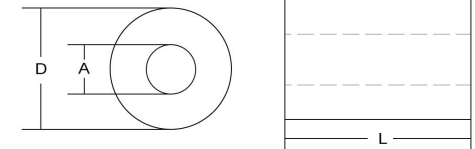
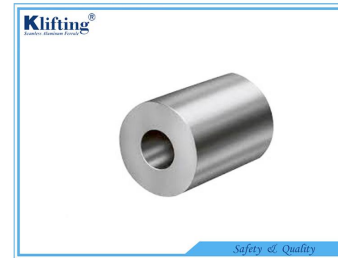


Product Name	Common Aluminum Oval Ferrule
Product Size Standard	EN 13411-3 (DIN3093)
Product Brand	<b>Kliffing</b> <sup>®</sup>
Product Material	3A21 Aluminum Alloy or Customized
Product Technology	Extrusion
Product Size	1 mm-18 mm

Common Aluminum Oval Ferrule					
Part No	Ferrule Size (mm)	A (mm)	B (mm)	S (mm)	L (mm)
KDA10010	1	1.2	2.4	0.65	5
KDA10015	1.5	1.7	3.4	0.75	6
KDA10020	2	2.2	4.4	0.85	7
KDA10025	2.5	2.7	5.4	1.05	9
KDA10030	3	3.3	6.6	1.25	11
KDA10035	3.5	3.8	7.6	1.5	13
KDA10040	4	4.4	8.8	1.7	14
KDA10045	4.5	4.9	9.8	1.9	16
KDA10050	5	5.5	11	2.1	18
KDA10060	6	6.6	13.2	2.5	21
KDA10065	6.5	7.2	14.4	2.7	23
KDA10070	7	7.8	15.6	2.9	25
KDA10080	8	8.8	17.6	3.3	28
KDA10090	9	9.9	19.8	3.7	32
KDA10100	10	10.9	21.8	4.1	35
KDA10110	11	12.1	24.2	4.5	39

KDA10120	12	13.2	26.4	4.9	42
KDA10130	13	14.2	28.4	5.4	46
KDA10140	14	15.3	30.6	5.8	49
KDA10160	16	17.5	35	6.7	56
KDA10180	18	19.6	39.2	7.6	63

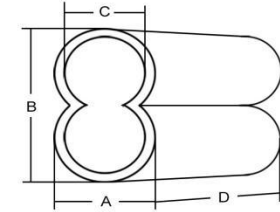
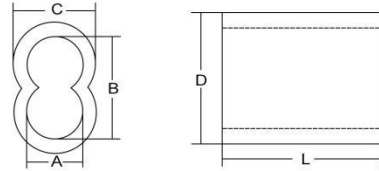
## US Aluminum Round Ferrule



Product Name	Aluminum Round Ferrule
Product Standard	US
Product Brand	<b>Kliffing</b> <sup>®</sup>
Product Material	3A21 Aluminum Alloy or Customized
Product Technology	Extrusion
Product Size	3/64 inch-3/8 inch

Aluminum Round Ferrule				
Part No	Ferrule Size (inch)	A(mm)	D(mm)	L(mm)
KRA0364	3/64"	1.54	4.4	4.16
KRA0116	1/16"	1.92	6.35	4.16
KRA0564	5/64"	2.38	6.35	4.16
KRA0332	3/32"	2.9	8.72	7.95
KRA0108	1/8"	3.86	8.72	7.95
KRA0532	5/32"	4.7	11.11	8.73
KRA0316	3/16"	5.54	11.11	8.73
KRA0732	7/32"	6.35	11.11	8.73
KRA0104	1/4"	7.2	17.46	17.46
KRA0516	5/16"	9.53	17.46	17.46
KRA0308	3/8"	11.13	17.46	17.46

## US Aluminum Hourglass Ferrule



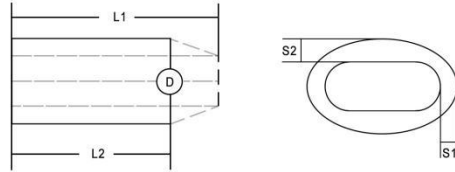
Product Name	Aluminum Hourglass Ferrule
Product Standard	US
Product Brand	<b>Klifting</b> <sup>®</sup>
Product Material	3A21 Aluminum Alloy or Customized
Product Technology	Extrusion
Product Size	3/64 inch-5/8 inch (1 mm-16 mm)

Aluminum Hourglass Ferrule (Thin Wall)					
Code	Rope Size (inch)	A (mm)	B (mm)	C (mm)	D (mm)
KHAT0108	1/8	6.3	9.9	4.1	12.7
KHAT0316	3/16	9.5	14.2	6.5	17.5
KHAT0104	1/4	11.2	16.6	8.3	25.4
KHAT0716	7/16	21.7	34.3	13.3	31.7

Aluminum Hourglass Ferrule							
Part No	Ferrule Size (inch)	Wire Rope (mm)	A (mm)	B (mm)	C (mm)	D (mm)	L (mm)
KHA0364	3/64	1	1.59	3.18	3.6	5.2	9.5
KHA0116	1/16	1.5	1.98	3.97	4.4	6.4	9.5
KHA0564	5/64	2	2.38	4.76	5.2	7.9	9.5
KHA0332	3/32	2.5	3.18	6.35	7.1	10.3	12.7
KHA0108	1/8	3	3.97	7.94	8.7	12.7	16
KHA0532	5/32	4	4.76	9.53	9.53	14.3	17
KHA0316	3/16	5	5.56	11.11	11.11	16.7	25
KHA0732	7/32	6	6.35	12.7	12.7	19	26
KHA0104	1/4	6.5	7.14	14.29	13.5	20.6	28
KHA0932	9/32	7	7.94	15.88	14.3	22.2	30
KHA0516	5/16	8 or 9	9.53	19.05	17.5	26.2	32
KHA0308	3/8	10 or 11	11.11	22.23	19.1	29.4	36
KHA0716	7/16	12	12.7	25.4	23.8	36.5	42
KHA0102	1/2	13	14.29	28.58	27	41.3	50
KHA0916	9/16	14	15.88	31.75	28.6	44.5	54
KHA0508	5/8	16	17.46	34.93	31.8	49.2	64

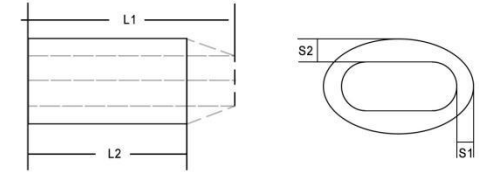


## Form C Ferrule With Inspection Hole



Product Name	Form C Ferrule with Inspection Hole
Product Standard	EN 13411
Product Brand	<b>Klifting</b> <sup>®</sup>
Product Material	5051A Aluminum Alloy or Customized
Product Technology	Extrusion and Process
Product Size	8 mm-30 mm

## Form C Ferrule Without Inspection Hole



Product Name	Form C Ferrule Without Inspection Hole
Product Standard	EN 13411
Product Brand	<b>Klifting</b> <sup>®</sup>
Product Material	5051A Aluminum Alloy or Customized
Product Technology	Extrusion and Process
Product Size	8 mm-30 mm

Form C Ferrule with Inspection Hole

Code	Ferrule Size (mm)	L1 (mm)	L2 (mm)	S1 (mm)	S2 (mm)	D (mm)
KCA11080	8	43	34	1.2	3.3	12
KCA11090	9	48	38.5	1.3	3.4	13
KCA11100	10	53	42	1.4	3.6	14
KCA11110	11	59	46.7	1.6	3.75	15.5
KCA11120	12	65	50.2	1.7	3.8	16.5
KCA11130	13	70	54.7	1.9	4.1	17.5
KCA11140	14	75	58.2	2.2	4.3	18.5
KCA11160	16	85	66.5	2.4	4.6	21
KCA11180	18	96	75	2.7	4.9	24
KCA11200	20	106	83	3.0	5.2	26
KCA11220	22	116	91	3.4	5.5	28
KCA11240	24	126	99.5	3.7	5.9	31
KCA11260	26	136	107.2	4.1	6.3	32.5
KCA11280	28	147	115.5	4.4	6.6	35
KCA11300	30	158	125	4.7	6.8	37.5

Form C Ferrule Without Inspection Hole

Code	Ferrule Size (mm)	L1 (mm)	L2 (mm)	S1 (mm)	S2 (mm)
KCA10080	8	43	34	1.2	3.3
KCA10090	9	48	38.5	1.3	3.4
KCA10100	10	53	42	1.4	3.6
KCA10110	11	59	46.7	1.6	3.75
KCA10120	12	65	50.2	1.7	3.8
KCA10130	13	70	54.7	1.9	4.1
KCA10140	14	75	58.2	2.2	4.3
KCA10160	16	85	66.5	2.4	4.6
KCA10180	18	96	75	2.7	4.9
KCA10200	20	106	83	3.0	5.2
KCA10220	22	116	91	3.4	5.5
KCA10240	24	126	99.5	3.7	5.9
KCA10260	26	136	107.2	4.1	6.3
KCA10280	28	147	115.5	4.4	6.6
KCA10300	30	158	125	4.7	6.8